

# SMART 80

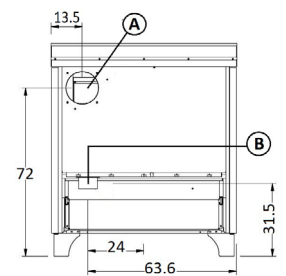
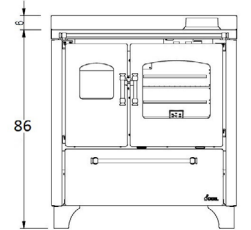
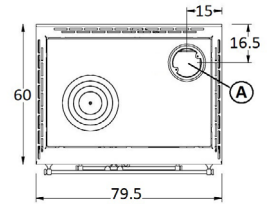
## Wood Insertion Cookers / Free standing

# CADEL

Certificate model name : SMART 80



Nominal power	kW	7,5
Reduced power	kW	-
Introduced thermal power (max)	kW	9,4
Nominal water useful power	kW	-
Reduced water useful power	kW	-
Seasonal energy efficiency	ηs [%]	76
Nominal efficiency	%	85,5
Reduced efficiency	%	-
Heating volume (min-max)	m³	214
Nominal CO at 13% O <sub>2</sub>	%	0,094
Reduced CO at 13% O <sub>2</sub>	%	-
Emissions CO (13% O <sub>2</sub> ) (min-max)	mg/Nm³	1167
Emissions OGC (13% O <sub>2</sub> ) (min-max)	mg/Nm³	69
Emissions NOX (13% O <sub>2</sub> ) (min-max)	mg/Nm³	85
Dust content at 13% O <sub>2</sub> (min- max)	mg/Nm³	20
Boiler capacity (H <sub>2</sub> O)	l	-
Hopper capacity	kg	-
Combustible		<b>Legna</b>
Hourly consumption (min-max)	kg/h	2,2
Autonomy (min-max)	h	-
Ignition electrical absorption (max)	W	-
Operating electrical absorption (max)	W	60
Supply and frequency	V - Hz	230 - 50
Chimney flue depression	Pa	12
Mass of smoke (min-max)	g/sec	7,1
Exhaust fumes temperature (max)	°C	179
Net weight	kg	152
Gross weight	kg	166
Exhaust fumes (A)	Ø mm	140
Hole combustion air inlet (B)	Ø mm	80
Ducting outlet (C)	Ø mm	-
Ducting capability up to	m	-



BImSchV 2015  
Regensburg  
München  
Stuttgart  
Aachen



### MATCH

71220034		Anthracite steel	EAN 8053859016557
71220035		White steel	EAN 8053859016564
71220036		Red steel	EAN 8053859016571

### OPTIONAL

5020005	Feet	EAN 8053859012597
5020007	Podium inox	EAN 8053859012610
5020010	H4 upstand	EAN 8053859012641
5020011	H6 upstand	EAN 8053859012658
5013003	Top	EAN 8033123613361
5021005	140/150 mm connection	EAN 8053859014256

### PLUS



Cooking



Central Top and back exhaust



Refractory stone inner with 2nd combustion air



Built - in



View on the oven



Cast iron door

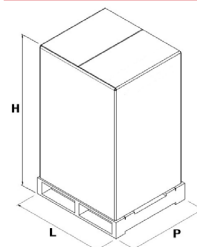


Freestanding



OPTIONAL  
Ventilation + light kit

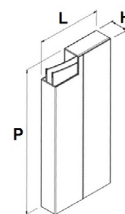
### STOVE PACKING



L (cm)	H (cm)	P (cm)
97	102,1	79

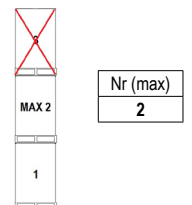
VOLUME (m³)
0,78

### LINING PACKING



	L (cm)	H (cm)	P (cm)
steel	60	13,5	80

### STOCKING



### TRANSPORT

